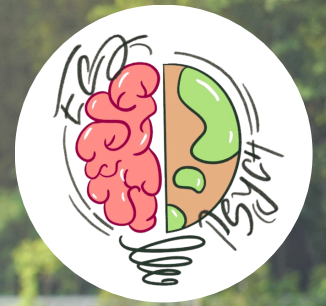


School Impact Report



Introduction

Student Ambassador: Miranda Fernandez
mg2miranda@gmail.com

School: Xi'an Hanova International School

Location: Xi'an, China

Reporting Period: March 2026 - May 2026

Impact in Numbers



5

Number of
Student Advisory
Board Members



3

Number of
solutions
implemented



100

Number of
individuals
impacted

Solutions Implemented

#1 Improving greenery

- Problem Observed: Students are disconnected from the school's natural environment, which leads to a lack of care for our school's greenery.
- Behavioural Insight Applied: Visual Salience
- Solution Implemented: Placed laminated signs featuring plant names and interesting facts to encourage students to identify and value the school's greenery. We added around 5 posters next to plants across different floors of the school to raise awareness of this cause and encourage students to appreciate the plants around them.



#2 AC Energy Conversation

- Problem Observed: Classroom windows are frequently left open while air conditioning is operating, resulting in unnecessary energy consumption and reduced cooling efficiency.
- Behavioural Insight Applied: Nudge Theory
- Solution Implemented: Designed and installed small card-sized reminder posters next to AC controls in all classrooms to encourage students and staff to close windows before turning on the air conditioning.



#3 Optimising Natural Light

- Problem Observed: The lights are left on constantly, even when natural sunlight provides enough light, even after school hours.
- Behavioural Insight Applied: Nudge Theory
- Solution Implemented: Printed and placed reminder posters next to light switches throughout the school to encourage students and staff to turn off lights when they are not needed and reduce unnecessary energy consumption.



#4 Lowering Cafeteria Plastic Usage

- Problem Observed: Many people buy drinks from the school cafés, resulting in the large consumption of plastic cups. This solution aims to reduce plastic consumption.
- Behavioural Insight Applied: Incentivisation
- Solution Implemented: Introduced a 2 RMB discount for people who bring their own reusable cups, encouraging students and staff to choose reusable cups instead of using a new plastic cup each time they purchase a drink.



School Event



- Hands-on sustainability workshop held on 9 April 2026 from 3:10 PM to 4:00 PM.
- Took place in the Year 4 homerooms at Xi'an Hanova International School.
- Participants: 35 Year 4 students (ages 8–9)
- Introduced sustainable alternatives to single-use plastic bags through an interactive activity where students painted their own tote bags.

- Introduced students to the environmental impact of single-use plastic bags and the importance of reusable alternatives.
- Students spent 30 minutes designing and decorating their own reusable canvas bags.
- The session was concluded with a discussion where students identified environmental issues caused by plastic and shared their personal plans for using the tote bags at home.
- Students expressed pride in their creative designs and were excited to use their bags in the future. Teachers noted that the workshop successfully made complex environmental concepts accessible and fun for younger learners.



Testimonials

"Working alongside my peers in this project was a fun experience and I'm glad that we made an actual impact in our school and inspired the younger students to care about making our communities a better place, starting with school."

- Abylaikhan Bakysultan,
Member of Student Advisory
Board

"Seeing the posters in the school made me more conscious of ways that we can help to save electricity. I think students should take part in more projects like this because it inspired me and many other students."

- Victoria Park, Grade 11
student

"The awareness posters served as a helpful reminder around the school for us to be more conscious of our actions regarding electricity waste and the importance of caring for our school environment. While the information is perhaps generally known, placing these signs next to the A/C controls and light switches does have an impact because it reminds people in our school to care about their impact as they are making those decisions."

- Ms Leah Neuman, History
Teacher