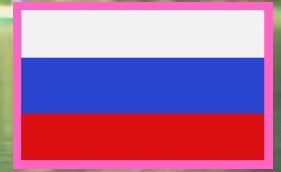
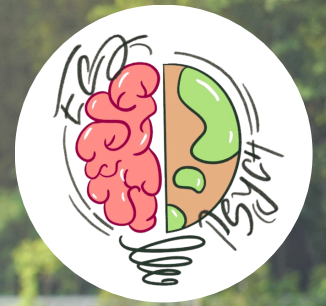


School Impact Report



Introduction

Student Ambassador: Victoria Korytina

victoria2009kor@gmail.com

School: British International School of Moscow No. 7

Location: 1 Priorova Street, Moscow, Russia

Reporting Period: October 2025 - March 2026

Impact in Numbers



Number of Student Advisory Board Members



Number of solutions implemented



Number of individuals impacted

Solutions Implemented

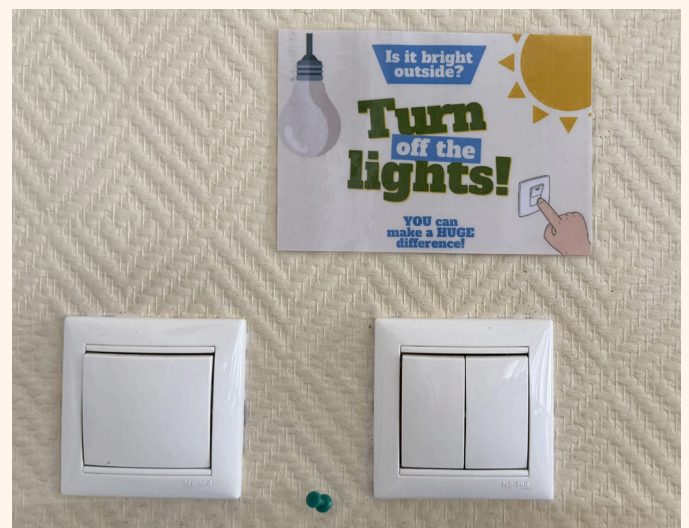
#1 Installation of recycling boxes in classrooms

- Problem Observed: Some papers are printed unnecessarily (information could be copied into students' books or uploaded online), while others are misprinted or printed single-sided. This leads to avoidable paper waste.
- Behavioural Insight Applied: Availability heuristic
- Solution Implemented: Placed 14 recycling boxes in classrooms and 1 next to the printer in the library, along with a poster reminding students to recycle paper. Informed teachers that the collected paper could be reused for one-sided printing, and encouraged art students to repurpose it for projects.



#2 Reminders to turn off lights

- Problem Observed: Ceiling lights are often left on when classrooms are empty or already well-lit by natural light.
- Behavioural Insight Applied: Nudge theory
- Solution Implemented: Placed A6-sized posters next to light switches in every classroom (28 in total) to remind students and teachers to turn off lights when unnecessary. Printed posters on recycled paper from collection boxes to avoid additional waste.



#3 Non-plastic-cup days

- Problem Observed: Students create a high amount of plastic waste by not bringing their own bottles, taking multiple cups at once, and not disposing of them properly, especially during events.
- Behavioural Insight Applied: Removal of choice
- Solution Implemented: Implemented non-plastic-cup days. Every Friday, plastic cups are removed from water refill stations to encourage students to bring their own bottles. Posters were also placed near refill stations as a reminder to be mindful of these days.



#4 Recycling Trash

- Problem Observed: There is a lot of trash around the school, including plastic cups and wrappers. Not using trash cans properly leads to disorganised waste and limited recycling. A categorised trash can exists, but it was placed in reception and not used effectively.
- Behavioural Insight Applied: Effort minimisation
- Intervention Implemented: Moved the categorised trash can from reception to the cafeteria to make it more convenient for students to use. Added a poster explaining how to sort waste correctly.



#5 Switching to paper cups for school events

- Problem Observed: Plastic cutlery and cups are widely used during parent-teacher meetings and other school events
- Behavioural Insight Applied: Removal of choice
- Solution Implemented: Persuaded the school to switch to paper cups for all school events and meetings from the next academic year onwards, led to effective policy change

#6 Reminding staff to turn off main screens when not in use

- Problem Observed: There was a waste of electricity and power due to the main screens / projectors being left on even when frozen or even when being used for the lesson.
- Behavioural Insight Applied: Nudge Theory
- Solution Implemented: During celebratory assembly, reminded staff and students to reduce unnecessary screen usage and be mindful about turning off projectors when not in use



School Event



- Date: 3rd December 2025
- Delivered by the Student Advisory Board to tutor groups from Year 7 to Year 13. The aim was to raise awareness of insect biomass loss caused by the widespread use of pesticides and fertilisers, light and chemical pollution, and the growth of industrial agriculture.
- The presentation also included practical solutions students could take to support insect preservation.

School Event



- Each session included an origami activity where students created insects out of paper.
- The origami insects were displayed around the school as a reminder of the initiative.
- Students engaged well and particularly enjoyed the interactive origami activity.

Celebratory Assembly

On 18th March, a 7-minute presentation was delivered to 125 students and teachers during an assembly. The presentation focused on 6 environmental problems within the school, such as littering and wasting electricity, and explained how these issues had been addressed over the past few months.



Testimonials

"Personally, I think that EcoPsych is an amazing organisation, because I resonate with its values and means of asserting them. That's why I appreciate combining psychology with environmentalism; the easier to do, the better."

– Alex Urvantseva, Member of Student Advisory Board

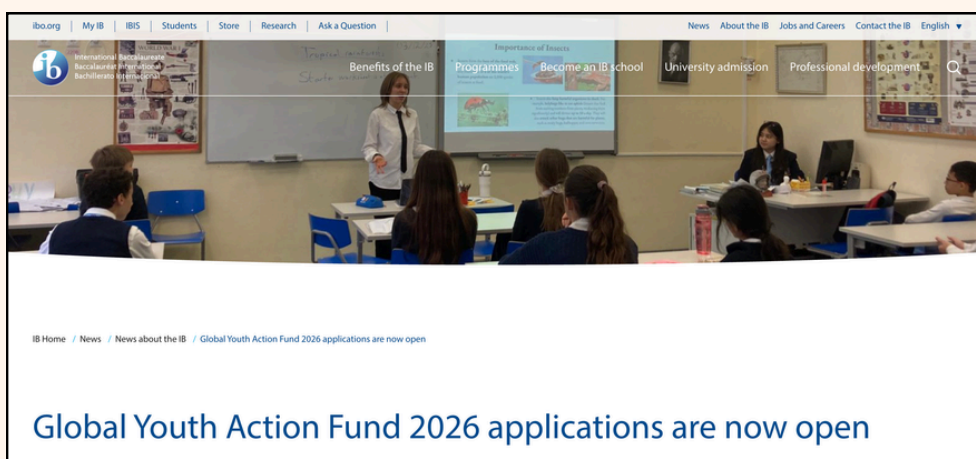
"I really enjoyed making dragonfly origami and learning about different insects. It's nice seeing my work in the corridor."

– Leoni, Year 8 Student

"The Environmental Committee experienced significant and rapid growth with the introduction of EcoPsych and became a lot more motivated for genuine action. The progress made this year is truly remarkable compared to the previous year."

– Mr Burman, Teacher, (Head of Key Stage 4 and 5)

Exciting News!



EcoPsych@BISM was featured on the official IB Global Youth Action Page for the 2026 application season. A quote from our founder, Sadhika, was also included on the [web page](#).

